

# **A leaf falls in loneliness**

for  
mezzosoprano  
clarinet in B $\flat$   
cello  
tape

Ørjan Matre 2006, revised 2010

## EXPLANATIONS



Inhale



Exhale



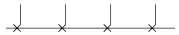
Small alterations of pitch (smaller than a quarter-tone). This notation appears from bar 122. Mezzosoprano and cello should adjust their intonation according to the resulting multiphonic clarinet pitches (which may differ from the notated pitches).



Japanese pronunciation



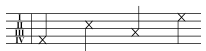
English pronunciation



Mezzosoprano : voiceless (whispering)



Clarinet : breathing sound only. Produced by blowing through the mouthpiece of the clarinet. Use fingering to produce three "pitches": high, middle and low register.



Cello: Soft sound without pitch. Place two or more fingers like harmonics on the notated string (roman numerals) in order not to produce any pitch.



Dynamic markings with quotation marks indicate the intensity of the performance action and not the resulting absolute volume of the action.

The three musicians should be amplified to match the tapesounds.

The score is transposed

Durata: ca. 10:30

# A leaf falls in loneliness

Ørjan Matre 2006, revised 2010

♩ = 104

Mezzo.

B $\flat$  Cl.

Vc.

Tape

↓ Track 1

6

Mezzo.

B $\flat$  Cl.

Vc.

Tape

jap. wo

(A leaf falls in loneliness)

11  $\text{♩} = 52$  ( $\text{♩} = \text{♩}$ )

13  $\text{♩} = 104$  ( $\text{♩} = \text{♩}$ )

Mezzo. (wo)

B♭ Cl. *mp* *mp* *sim.* *pp* *mp*

Vc. *mf* *pp* *mf*

col legno ord. col legno

↓ Track 2

Tape

16

Mezzo.

B♭ Cl. *pp* *mp* *mp* *mp* *pp* *mp*

Vc. *pp* *mf* *pp* *mf* *pp* *mf*

ord. col legno ord. col legno ord. col legno

Tape

(A leaf falls in loneliness)

21

Mezzo.

B♭ Cl.

Vc.

Tape

Mezzo-soprano: *mf* jap. wo

B♭ Clarinet: *mp*, *mp*, *mp*, *mp*, *mp*, *pp*, *mp*, *mp*

Violoncello: *pp*, *mf*, *pp*, *mf*, *pp*, *mf*

26

Mezzo.

B♭ Cl.

Vc.

Tape

↓ Track 3

Mezzo-soprano: *mf* wo ta

B♭ Clarinet: *mp*, *mp*, *sim.*, *pp*, *mp*

Violoncello: *mp*, *gl.*, *pp*, *mp*, *gl.*, *pp*

\* As if gasping for breath

(A leaf falls in loneliness)

32

Mezzo.

B♭ Cl.

Vc.

Tape

col legno  
*mf*  
ord. sul tasto  
*mp*  
4:3  
gl.  
*pp*  
*mp*  
gl.  
*pp*  
*mp*  
ord.  
*pp*  
col legno  
*mf*

37

Mezzo.

B♭ Cl.

Vc.

Tape

*mp*  
*mp*  
*mp*  
tr  
tr  
tr  
ord.  
*pp*  
*mf*  
ord.  
*pp*  
col legno  
*mf*

(A leaf falls in loneliness)

42

Mezzo. *mf* **44**  $\text{♩} = 52$  *mf* *pp*

B♭ Cl. *mp* *pp* *mp* *pp* *mf*

Vc. *mf* *pp* *mf*

Tape

↓ Track 4

47

Mezzo. *mp* *mp*

B♭ Cl. *pp* *mp* *mp* *pp*

Vc. *mf* *pp* *mp* *pp* *mp* *pp*

Tape

\* As if gasping for breath

(A leaf falls in loneliness)

53

Mezzo. *mp* *mp* *p* 58  $\text{♩} = 60$

hi to wo ha te

B♭ Cl. *p* *mf* *mp*

Vc. *mp* *pp* *mf* *mp*

↓ Track 5

59

Mezzo. *pp*

hi

B♭ Cl. *pp* *p* *pp* *mp* *mp* *pp*

Vc. *mp* *mp* *mp*

↓ Track 6

↓ Track 7



(A leaf falls in loneliness)

65

Mezzo. *mp* *mp* *mf*

eng. I (a) i a - m

B♭ Cl. *p* *mf*

Vc. *mp* *pp* *mf*

↓ Track 8

Tape

Detailed description: This musical score block covers measures 65 to 70. The Mezzo-soprano part begins at measure 65 with a dynamic of *mp* and includes the lyrics 'eng. I (a) i' and 'a - m'. The B♭ Clarinet part starts at measure 65 with a dynamic of *p* and reaches *mf* by measure 68. The Violoncello part starts at measure 65 with a dynamic of *mp*, drops to *pp* at measure 66, and returns to *mf* at measure 68. The score includes various musical notations such as slurs, accents, and dynamic markings.

71  $\text{♩} = 72$

Mezzo. *p* *p* *mp* *mf*

[jap.] shi sa wo to

B♭ Cl. *mp* *mf*

Vc. *mf* *mp* *mf*

Tape

Detailed description: This musical score block covers measures 71 to 76. The Mezzo-soprano part starts at measure 71 with a dynamic of *p* and includes the lyrics '[jap.] shi sa wo to'. The B♭ Clarinet part starts at measure 71 with a dynamic of *mp* and includes the marking '3:2' and 'gl.'. The Violoncello part starts at measure 71 with a dynamic of *mf* and includes the marking 'sul tasto 4:3'. The score includes various musical notations such as slurs, accents, and dynamic markings.

\* As if gasping for breath

(A leaf falls in loneliness)

78

Mezzo. *mp* te hi to ki gliss. *pp*

B♭ Cl. *mp* *mf* *mp* *mp* *pp*

Vc. *mp* *mf* *mp* *mp* *pp*

Track 9

83

Mezzo. *mp* gliss. ri a

B♭ Cl. *pp* *p*

Vc. *mp* *mf*

Track 10

89

Mezzo. *p* ka ki

B♭ Cl. *mp* "mf" *mp* "mf"

Vc. *mp* "mf" *mp* "mf"

Tape

94

Mezzo. *p* ri hi to *pp* *mp* *pp*

B♭ Cl. *mp* *pp* *p*

Vc. *mp* *pp* *mp* *pp* *ppp*

Tape

\* As if gasping for breath

(A leaf falls in loneliness)

100

Mezzo. sa bi eng. one jap. shi sa

B♭ Cl. *pp* *p* *pp* *pp* *p* *pp* *p* *pp*

Vc. *pp* *ppp* *mp* *pp* *ppp* *pp* *ppp*

Tape ↓ Track 11

(adjust intonation to clarinet multiphonics)

106

Mezzo. ha ha ha

B♭ Cl. *p* *pp* *mp* *mp* *pp*

Vc. *pp* *mp* *pp* *mp* *pp*

Tape







148 153

Mezzo. *p* *p* 20'' 20'' 20''

B♭ Cl. *pp* *pp* 20'' 20''

Vc. *pp* *ppp* *ppp* *pp* *ppp* *ppp* 20'' 20''

Tape

154

Mezzo. *p* *p* *p* 20'' 20'' 20''

B♭ Cl. *pp* *pp* *pp* 20'' 20'' 20''

Vc. *pp* *ppp* *ppp* *pp* *pp* 20'' 20''

Tape

↓ Track 12



160

Mezzo.

B♭ Cl.

Vc.

Tape

(♩ = 72)

Mezzo.

B♭ Cl.

Vc.

Tape

sa bi

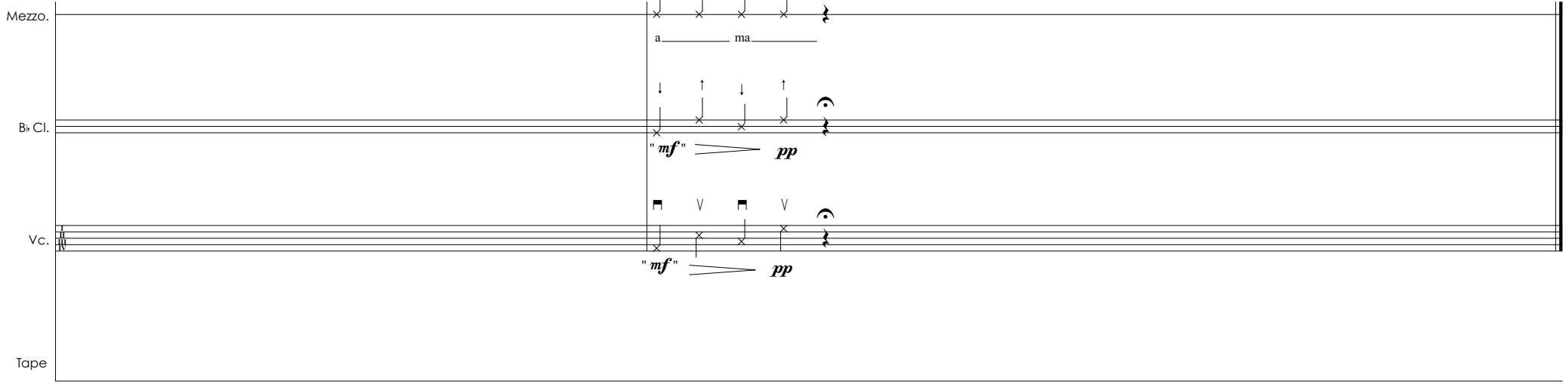
jap.

shi sa


(A leaf falls in loneliness)


(♩ = 72)

*mp*  *pp*



Mezzo.  
a — ma

B♭ Cl.  
"*mf*"  *pp*

Vc.  
"*mf*"  *pp*

Tape